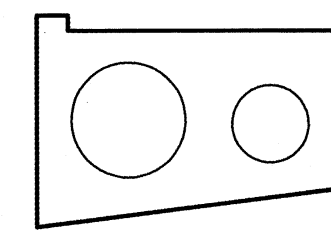
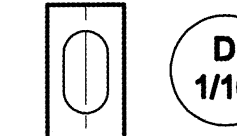
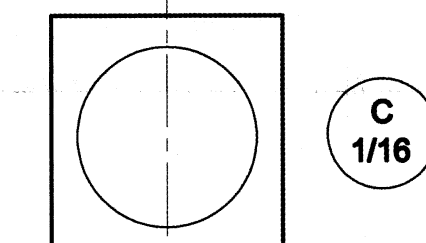
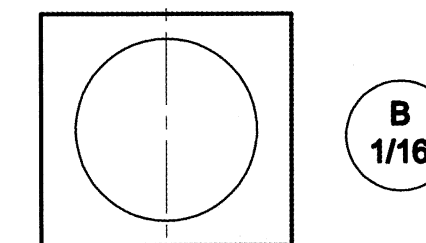
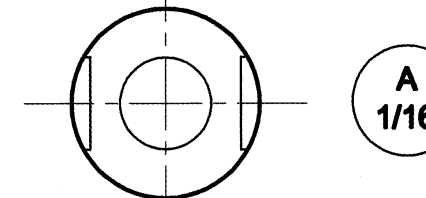


TAILPLANE & ELEVATOR (ONLY ONE SIDE)
1/16"



FIN BOTTOM 3/32" INSIDE FUSELAGE

GRAIN
FOR A,B,C,D

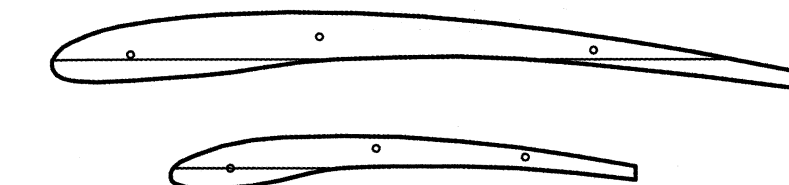
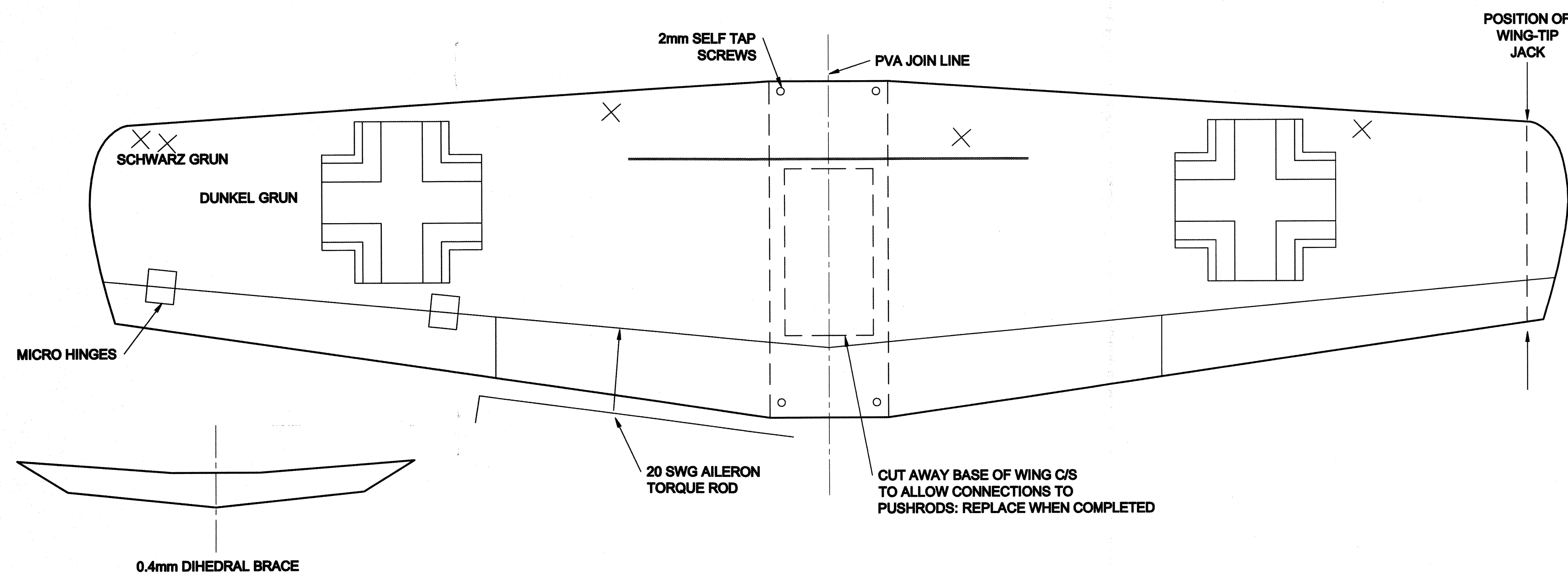


Me (Bf) 109-E

SPAN	=	17 3/4"
LENGTH	=	14 3/4"
WING AREA	=	75 sq in
WEIGHT	=	1.8 oz
WING LOADING	=	3.8 oz sq foot
ELECTRICAL/MECHANICAL PARTS FROM E/R/C SPITFIRE (J. PERKINS)		

COLOUR SCHEME FROM ANITA'S ACRYLIC WATER BASED PAINTS

- NOSE & RUDDER - YELLOW
- FUSELAGE - UNDERCOLOUR - LIGHT BLUE
GREY MOTTLING ON UPPER HALF
- WING & TAILPLANE - SCHWARZ GRUN - BLACK GREEN
DRUNKEL GRUN - DARK GREEN



Quiet & Electric Flight International
MW3498
Baby Me109
A 17 3/4" span foam and balsa model by Chris Golds of the famous WW2 German fighter.
© Traplet Publications Limited